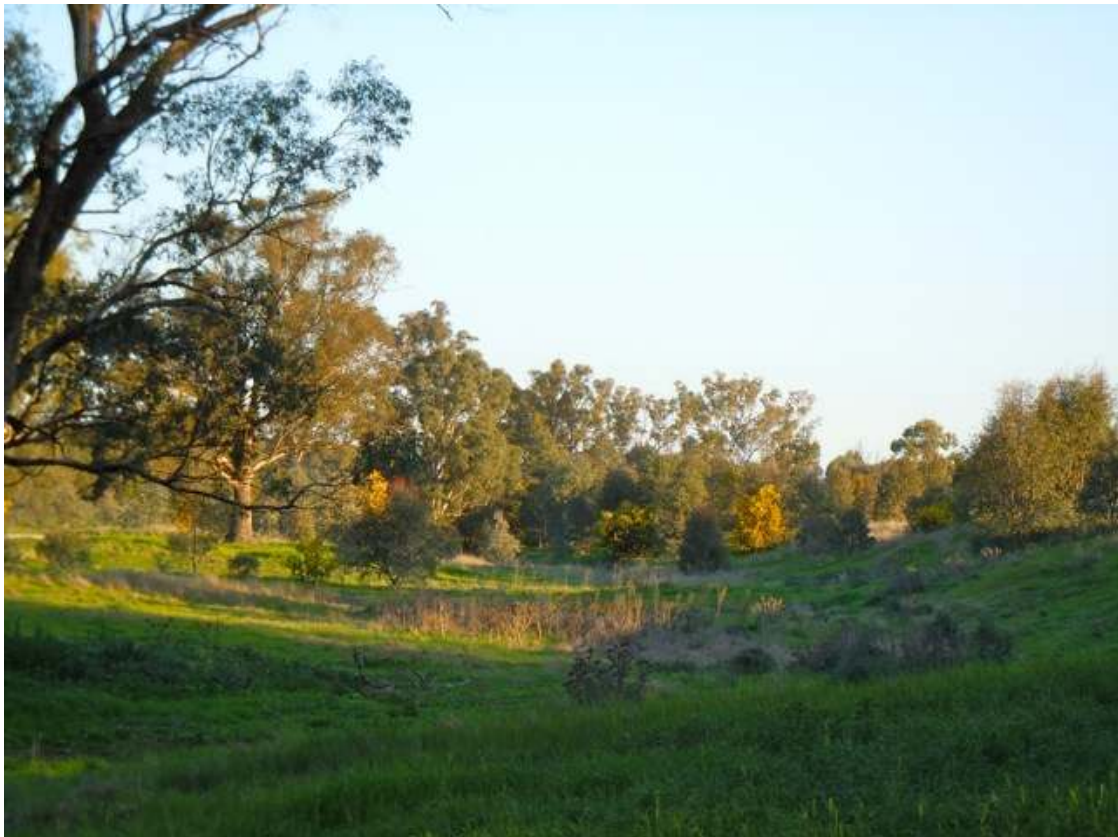


# Murrumbidgee Cross Property Planning Project

## **Flora and Bird Surveys: Tables of all species recorded across all Sites Spring 2013**

By Alison Elvin, Natural Capital and Dr Fiona Christie,  
University of Melbourne



**SPECIES LIST OF BIRDS RECORDED BY DR. CHRISTIE DURING THE BIRD SURVEYS.**

Bird species and total abundance observed both during formal surveys and incidental sightings. \* indicates birds observed outside of surveys.

<b>Common Name</b>	<b>Scientific Name</b>	<b>Total Abundance</b>	<b>Threatened</b>
Apostlebird	<i>Struthidea cinerea</i>	1	
Australian Magpie	<i>Cracticus tibicen</i>	60	
Australian Raven	<i>Corvus coronoides</i>	13	
Australian Reed Warbler	<i>Acrocephalus australis</i>	2	
Australian Wood Duck	<i>Chenonetta jubata</i>	2	
Barn Owl*	<i>Tyto alba</i>	1	
Black Falcon	<i>Falco subniger</i>	2	
Black Fronted Dotterel	<i>Euseyornis melanops</i>	4	
Black shouldered Kite*	<i>Elanus axillaris</i>	1	
Black-faced Cuckoo-Shrike	<i>Coracina novaehollandiae</i>	19	
Blue-faced Honeyeater*	<i>Entomyzon cyanotis</i>	3	
Brown Falcon	<i>Falco berigora</i>	2	
Brown Songlark	<i>Cincloramphus cruralis</i>	1	
Brown Thornbill	<i>Acanthiza pusilla</i>	3	
Brown Treecreeper	<i>Climacteris picumnus</i>	6	Yes
Brown-headed Honeyeater	<i>Melithreptus brevirostris</i>	13	
Buff-rumped Thornbill	<i>Acanthiza reguloides</i>	39	
Collared Sparrowhawk	<i>Accipiter cirrocephalus</i>	1	
Common Bronzewing	<i>Phaps chalcoptera</i>	7	
Common Starling	<i>Sturnus vulgaris</i>	18	exotic
Crested Pigeon	<i>Ocyphaps lophotes</i>	17	
Crested Shrike-tit	<i>Falcunculus frontatus</i>	2	
Crimson Rosella	<i>Platycercus elegans</i>	6	
Diamond Firetail	<i>Stagonopleura guttata</i>	10	yes
Dollarbird*	<i>Eurystomus orientalis</i>	1	
Double-barred Finch	<i>Taeniopygia bichenovii</i>	8	
Dusky Woodswallow	<i>Artamus cyanopterus</i>	8	
Eastern Rosella	<i>Platycercus eximius</i>	30	
Eastern Yellow Robin	<i>Eopsaltria australis</i>	4	
Fairy Martin*	<i>Petrochelidon ariel</i>	3	
Fan-tailed Cuckoo	<i>Cacomantis flabelliformis</i>	2	
Flame Robin	<i>Petroica phoenicea</i>	2	yes
Galah	<i>Cacatua roseicapillus</i>	52	
Golden Whistler	<i>Pachycephala pectoralis</i>	2	
Grey Butcherbird	<i>Cracticus torquatus</i>	11	
Grey-crowned Babbler	<i>Pomatostomus temporalis</i>	9	Yes
Grey Fantail	<i>Rhipidura albiscapa</i>	20	
Grey Shrike-thrush	<i>Colluricincla harmonica</i>	16	
Grey Teal	<i>Anas gracilis</i>	6	
Horsefield's Bronze-Cuckoo	<i>Chrysococcyx basalis</i>	1	
House Sparrow	<i>Passer domesticus</i>	4	exotic
Jacky Winter	<i>Microeca fascinans</i>	3	
Laughing Kookaburra	<i>Dacelo novaeguineae</i>	13	
Little Corella	<i>Cacatua sanguinea</i>	10	

Little Friarbird	<i>Philemon citreogularis</i>	26	
Little Raven*	<i>Corvus mellori</i>	4	
Magpie-lark	<i>Grallina cyanoleuca</i>	20	
Mistletoebird	<i>Dicaeum hirundinaceum</i>	2	
Noisy Miner	<i>Manorina melanocephala</i>	70	nuisance
Olive-backed Oriole	<i>Oriolus sagittatus</i>	3	
Pacific Black Duck	<i>Anas superciliosa</i>	9	
Peaceful Dove	<i>Geopelia striata</i>	7	exotic
Peregrine Falcon	<i>Falco peregrinus</i>	1	
Pied Butcherbird	<i>Cracticus nigrogularis</i>	11	
Pied Currawong	<i>Strepera graculina</i>	9	
Rainbow Bee-eater	<i>Merops ornatus</i>	3	
Red Wattlebird	<i>Anthochaera carunculata</i>	11	
Red-browed Finch	<i>Neochmia temporalis</i>	15	
Red-capped Robin	<i>Petroica goodenovii</i>	5	
Red-kneed Dotterel	<i>Erythronyctes alba</i>	1	
Red-rumped Parrot	<i>Psephotus haematonotus</i>	30	
Restless Flycatcher	<i>Myiagra inquieta</i>	1	
Rufous Song-lark	<i>Cincloramphus mathewsi</i>	28	
Rufous Whistler	<i>Pachycephala rufiventris</i>	21	
Sacred Kingfisher	<i>Todiramphus sanctus</i>	1	
Scarlet Robin	<i>Petroica boodang</i>	2	yes
Silveryeye	<i>Zosterops lateralis</i>	8	
Southern Boobook*	<i>Ninox novaeseelandiae</i>	1	
Spiny-cheeked Honeyeater	<i>Acanthagenys rufogularis</i>	2	
Spotted Dove	<i>Streptopelia chinensis</i>	1	
Spotted Pardalote	<i>Pardalotus punctatus</i>	7	
Striated Pardalote	<i>Pardalotus striatus</i>	32	
Striated Thornbill	<i>Acanthiza lineata</i>	12	
Sulphur-crested Cockatoo	<i>Cacatua galerita</i>	31	
Superb Fairy-wren	<i>Malurus cyaneus</i>	34	
Superb Parrot	<i>Polytelis swainsonii</i>	34	yes
Varied Sittella	<i>Daphoenositta chrysoptera</i>	4	yes
Wedge-tailed Eagle*	<i>Aquila audax</i>	2	
Weebill	<i>Smicrornis brevirostris</i>	16	
Welcome Swallow	<i>Hirundo neoxena</i>	4	
Western Gerygone	<i>Gerygone fusca</i>	12	
White-browed Scrubwren	<i>Sericornis frontalis</i>	2	
White-faced Heron	<i>Egretta novaehollandiae</i>	3	
White-necked Heron	<i>Ardea pacifica</i>	1	
White-plumed Honeyeater	<i>Lichenostomus penicillatus</i>	78	
White-throated Treecreeper	<i>Corombates leucophaea</i>	9	
White-winged Chough	<i>Corcorax melanorhamphos</i>	42	
White-winged Triller*	<i>Lalage sueurii</i>	1	
Willie Wagtail	<i>Phipidura leucaphrys</i>	36	
Yellow-faced Honeyeater	<i>Lichenostomus chrysops</i>	3	
Yellow-rumped Thornbill	<i>Acanthiza chrysorrhoa</i>	7	

Yellow-tufted Honeyeater	<i>Lichenostomus melanops</i>	7	
--------------------------	-------------------------------	---	--

**SPECIES LIST OF FLORA RECORDED BY ALISON ELVIN DURING THE FLORA SURVEYS.**

NOTE - There are no threatened species recorded here, however there are two Threatened Ecological communities – the Grey Box grassy Woodland, and The Box-Gum grassy Woodlands within the survey areas. These are detailed in the Final Report.

Many of the woodland forbs listed here are uncommon.

<b>COMMON NAME</b>	<b>GENUS</b>	<b>SPECIES</b>
Yellow Box	<i>Eucalyptus</i>	<i>melliodora</i>
Red Box	<i>Eucalyptus</i>	<i>polyanthemous</i>
River Red Gum	<i>Eucalyptus</i>	<i>camaldulensis</i>
Blakely's Red Gum	<i>Eucalyptus</i>	<i>blakelyi</i>
Tumbledown Gum	<i>Eucalyptus</i>	<i>dealbata</i>
Mugga Red Ironbark	<i>Eucalyptus</i>	<i>sideroxylon</i>
Scribbly Gum	<i>Eucalyptus</i>	<i>rossi</i>
Red Stringybark	<i>Eucalyptus</i>	<i>macrorhynca</i>
White Box	<i>Eucalyptus</i>	<i>albens</i>
Grey Box	<i>Eucalyptus</i>	<i>microcarpa</i>
Apple Box	<i>Eucalyptus</i>	<i>bridgesiana</i>
Mistletoe	<i>Amyema sp</i>	
Kurrajong	<i>Brachychiton</i>	<i>populneus</i>
White Cypress pine	<i>Callitris</i>	<i>glaucophylla</i>
Black Cypress pine	<i>Callitris</i>	<i>endlicheri</i>
She-oak	<i>Casuarina</i>	<i>cunninghamiana</i>
Hill Oak	<i>Allocasuarina</i>	<i>luehmannii</i>
Drooping She-oak	<i>Allocasuarina</i>	<i>Verticillata syn stricta</i>
<b>SHRUBS - WATTLES</b>		
Golden wattle	<i>Acacia</i>	<i>pycnantha</i>
Cootamundra wattle	<i>Acacia</i>	<i>baileyana</i>
Silver wattle	<i>Acacia</i>	<i>dealbata</i>
Currawang	<i>Acacia</i>	<i>doratoxylon</i>
Hickory wattle	<i>Acacia</i>	<i>implexa</i>
Varnish wattle	<i>Acacia</i>	<i>verniciflua</i>
Golden Dust Wattle	<i>Acacia</i>	<i>acinacea</i>
Early Wattle	<i>Acacia</i>	<i>genistifolia</i>
Kangaroo Thorn	<i>Acacia</i>	<i>paradoxa</i>
Box-leaf Wattle	<i>Acacia</i>	<i>buxifolia</i>
Western Silver Wattle	<i>Acacia</i>	<i>decora</i>
Western Black Wattle	<i>Acacia</i>	<i>hakeoides</i>
<b>SHRUBS - OTHER</b>		
Sifton bush	<i>Cassinia</i>	<i>arcuata</i>
Dolly Bush	<i>Cassinia</i>	<i>aculeata</i>

Violet Kunzea	<i>Kunzea</i>	<i>parvifolia</i>
Common Fringe Myrtle	<i>Calytrix</i>	<i>tetragona</i>
Native Blackthorn	<i>Bursaria</i>	<i>spinosa</i>
Tea-Tree	<i>Leptospermum</i>	<i>continentale</i>
Hop Bush	<i>Dodonea</i>	<i>viscosa</i>
Woolly Grevillea	<i>Grevillea</i>	<i>lanigera</i>
Prickly Paperbark	<i>Melaleuca</i>	<i>stypheloides</i>
Bracelet Honey Myrtle	<i>Melalueca</i>	<i>amarillis</i>
<b>SMALL SHRUBS</b>		
Hoary Guinea Flower	<i>Hibbertia</i>	<i>obtusifolia</i>
Guinea Flower	<i>Hibbertia</i>	<i>sericea</i>
Daphne Heath	<i>Brachyloma</i>	<i>daphnoides</i>
Peach Heath	<i>Lissanthe</i>	<i>strigosa</i>
Urn Heath	<i>Melichrus</i>	<i>urceolata</i>
Small-leaf Bush Pea	<i>Pultanea</i>	<i>foliolosa</i>
Old Man Saltbush	<i>Atriplex</i>	<i>mummularia</i>
Slender Bitter Pea	<i>Daviesia</i>	<i>leptophylla</i>
Showy Parrot Pea	<i>Dillwynia</i>	<i>sericea</i>
Austral Indigo	<i>Indigophera</i>	<i>australis</i>
Bush Pea	<i>Pultanea</i>	<i>procumbens</i>
Pretty Cryptandra	<i>Cryptandra</i>	<i>amara</i>
Grass Tree	<i>Xanthorrhoea</i>	<i>glauca</i>
Fringe Myrtle	<i>Calytrix</i>	<i>tetragona</i>
<b>FORBS</b>		
Native Soya	<i>Glycine</i>	<i>tabacina</i>
Slender Violet	<i>Hybanthus</i>	<i>monopetalus</i>
Curved Rice Flower	<i>Pimelea</i>	<i>curviflora</i>
Slender Rice Flower	<i>Pimelea</i>	<i>linifolia</i>
Mulga Fern	<i>Cheilanthes</i>	<i>seiberi</i>
Rock Fern	<i>Cheilanthes</i>	<i>austrotenuifolia</i>
Chocolate Lily	<i>Dichopogon</i>	<i>strictus</i>
Vanilla Lily	<i>Arthropodium</i>	<i>milleflorum</i>
Small Vanilla Lily	<i>Arthropodium</i>	<i>minus</i>
Yellow Rush Lily	<i>Tricoryne</i>	<i>elatior</i>
Bulbine Lily	<i>Bulbine</i>	<i>bulbosa</i>
Early Nancy	<i>Wurmbea</i>	<i>dioica</i>
Flax Lily	<i>Dianella</i>	<i>revoluta</i>
Smooth Flax Lily	<i>Dianella</i>	<i>longifolia</i>
Nodding Blue Lily	<i>Stypandra</i>	<i>glauca</i>
Wattle Mat-rush	<i>Lomandra</i>	<i>filiformis</i>
Many-flowered Mat-rush	<i>Lomandra</i>	<i>multiflora</i>
Twining Fringe Lily	<i>Thysanotus</i>	<i>tuberosus</i>
Milkmaids	<i>Burchardia</i>	<i>umbellata</i>
Golden Weather-grass	<i>Hypoxis</i>	<i>hygrometrica</i>
Swan Greenhood Orchid	<i>Pterostylis</i>	<i>cycncephala</i>
Blue Finger Orchid	<i>Caladenia</i>	<i>caerulea</i>

Pink/white Finger Orchid	<i>Caladenia</i>	<i>carnea</i>
Waxlip Orchid	<i>Glossodia</i>	<i>major</i>
Common Onion Orchid	<i>Microtis</i>	<i>unifolia</i>
Slender Sun Orchid	<i>Thelymitra</i>	<i>pauciflora</i>
Tiger Orchid	<i>Diuris</i>	<i>sulphurea</i>
Ivy Goodenia	<i>Goodenia</i>	<i>hederacea</i>
Scrambled Eggs	<i>Goodenia</i>	<i>pinnatifida</i>
Common Buttercup	<i>Ranunculus</i>	<i>lappaceus</i>
Common Everlasting	<i>Chrysocephalum</i>	<i>apiculatum</i>
Common Woodruff	<i>Asperula</i>	<i>conferta</i>
Pale Sundew	<i>Drosera</i>	<i>peltata</i>
Austral bears-ear	<i>Cymbonotus</i>	<i>pressianus</i>
New Holland daisy	<i>Vittadinia</i>	<i>muelleri</i>
Native Bluebell	<i>Wahlenbergia</i>	<i>stricta</i>
False Sarsaparilla	<i>Hardenbergia</i>	<i>violacae</i>
Blue Storks' Bill	<i>Erodium</i>	<i>crinitum</i>
Yellow Wood Sorrel	<i>Oxalis</i>	<i>perennans</i>
Corrugated Sida	<i>Sida</i>	<i>corrugata</i>
Native Geranium	<i>Geranium</i>	<i>solanderi</i>
Native Cranesbill	<i>Geranium</i>	<i>retrosum</i>
Willowherb	<i>Epilobium</i>	<i>billardierianum</i>
Grass trigger Plant	<i>Stylidium</i>	<i>graminifolium</i>
Common Raspwort	<i>Gonocarpus</i>	<i>tetragynus</i>
Hill Raspwort	<i>Gonocarpus</i>	<i>elatus</i>
Native Swamp Dock	<i>Rumex</i>	<i>brownii</i>
Variable Plantain	<i>Plantago</i>	<i>varia</i>
Twin-flowered Knawel	<i>Scleranthus</i>	<i>biflorus</i>
Kidneyweed	<i>Dichondra</i>	<i>repens</i>
Stinking Pennywort	<i>Hydrocotyle</i>	<i>laxiflora</i>
Sheep's Burr	<i>Acaena</i>	<i>ovina</i>
Native Carrot	<i>Daucus</i>	<i>glochidiatus</i>
Twining Glycine	<i>Glycine</i>	<i>clandestina</i>
Climbing Saltbush	<i>Einadia</i>	<i>nutans</i>
Australian Bindweed	<i>Convolvulus</i>	<i>erubescens</i>
Showy Isotome	<i>Isotoma</i>	<i>axillaris</i>
Creamy candles	<i>Stackhousia</i>	<i>monogyna</i>
Cotton Fireweed	<i>Senecio</i>	<i>quadridentatus</i>
Sticky Everlasting Daisy	<i>Bracteantha</i>	<i>viscosa</i>
Australian Stone crop	<i>Crassula</i>	<i>sieberiana</i>
Cudweed	<i>Gnaphalium</i>	<i>sp.</i>
Twin-flowered Knawel	<i>Scleranthus</i>	<i>biflorus</i>
Yellow Burr Daisy	<i>Calotis</i>	<i>lappulacea</i>
<b>NATIVE GRASSES, REEDS RUSHES &amp; SEDGES</b>		
Kangaroo Grass	<i>Themeda</i>	<i>australis</i>
Corkscrew grass	<i>Austrostipa</i>	<i>scabra</i>
Brushtail Speargrass	<i>Austrostipa</i>	<i>densiflora</i>

Wallaby Grass	<i>Rytidosperma</i>	<i>sp.</i>
Weeping Grass	<i>Microleana</i>	<i>stipoides</i>
Red-leg Grass	<i>Bothriochloa</i>	<i>macra</i>
Hairy Panic	<i>Panicum</i>	<i>effusum</i>
Snow Grass	<i>Poa</i>	<i>sieberiana</i>
Common Sedge	<i>Carex</i>	<i>appressor</i>
Pin-Rush	<i>Juncus</i>	<i>filicaulis</i>
Common Rush	<i>Juncus</i>	<i>urstitus</i>
Curly Windmill grass	<i>Enteropogon</i>	<i>acicularis</i>
Umbrella Grass	<i>Chloris</i>	<i>truncata</i>
Bottlewashers	<i>Enneapogon</i>	<i>nigricans</i>
Common Wheat Grass	<i>Elymus</i>	<i>scaber</i>
Short-haired Plume Grass	<i>Dichelachne</i>	<i>micrantha</i>
Wiregrass	<i>Aristida</i>	<i>ramosa</i>
<b>EXOTIC FORBS/WEEDS</b>		
Onion Grass	<i>Romulea</i>	<i>rosea</i>
Capeweed	<i>Arctotheca</i>	<i>calendula</i>
Common StorksBill	<i>Erodium</i>	<i>cicutarium</i>
Vipers Bugloss	<i>Echium</i>	<i>vulgare</i>
Pattersons Curse	<i>Echium</i>	<i>plantagineum</i>
Wild Sage	<i>Salvia</i>	<i>verbenaca</i>
Clovers and Trefoils	<i>Trifolium sp.</i>	<i>many species</i>
Soursob	<i>Oxalis</i>	<i>pes-caprae</i>
Proliferous Pink	<i>Petrorhagia</i>	<i>nanteuilli</i>
Common Centaury	<i>Centaurium</i>	<i>erythraea</i>
Ribwort Plantain	<i>Plantago</i>	<i>lanceolata</i>
Catsear / Flatweed	<i>Hypochaeris</i>	<i>radicata</i>
Smooth Catsear	<i>Hypochaeris</i>	<i>glabra</i>
St John's Wort	<i>Hypericum</i>	<i>perforatum</i>
Thistle	<i>Carduus</i>	<i>sp</i>
Black Thistle	<i>Cirsium</i>	<i>vulgare</i>
Scotch Thistle	<i>Onopordum</i>	<i>acanthium</i>
Variegated Thistle	<i>Silybum</i>	<i>marianum</i>
Saffron Thistle	<i>Carthamus</i>	<i>lanatus</i>
Storksbill	<i>Erodium</i>	<i>cicutarium</i>
Sow thistle	<i>Sonchus</i>	<i>sp</i>
Wild lettuce	<i>Lactuca</i>	<i>sativa</i>
Prickly lettuce	<i>Lactuca</i>	<i>serriola</i>
Jersey Cudweed	<i>Pseudonapthaliun</i>	<i>luteoalbum</i>
Bartsia	<i>Bartsia</i>	<i>trixago</i>
Wild Mustards	<i>Brassica</i>	<i>sp</i>
Fleabane	<i>Conyza</i>	<i>bonariensis</i>
Horehound	<i>Marrubium</i>	<i>vulgare</i>
Shepherds Purse	<i>Capsella</i>	<i>bursa-pastoris</i>
Exotic Dockweed	<i>Rumex</i>	<i>crispus</i>
Blackberry	<i>Rubus</i>	<i>fruticosus</i>
African Boxthorn	<i>Lycium</i>	<i>ferocissimum</i>

Monterey Pine	<i>Pinus</i>	<i>Radiata</i>
Stinging Nettle -	<i>Urtica</i>	<i>sp</i>
Fumitory	<i>Fumaria</i>	<i>sp</i>
<b>EXOTIC GRASSES</b>		
Phalaris / Canary grass	<i>Phalaris</i>	<i>aquatica</i>
Cocksfoot	<i>Dactylis</i>	<i>glomerata</i>
Couch Grass	<i>Cynodon</i>	<i>dactylon</i>
Ryegrass	<i>Lolium</i>	<i>perenne</i>
Bulbous Bluegrass	<i>Poa</i>	<i>bulbosa</i>
Barley Grass	<i>Hordeum</i>	<i>sp</i>
Rat's Tail Fescue	<i>Vulpia</i>	<i>sp</i>
Quaking Grass	<i>Briza</i>	<i>sp</i>
Brome Grass	<i>Bromus</i>	<i>sp</i>
Wild Oats	<i>Avena</i>	<i>fatua</i>

**FAUNA SPECIES RECORDED BY ALISON ELVIN DURING THE FLORA SURVEYS.**

<b>COMMON NAME</b>	<b>SPECIES NAME</b>
Eastern Grey Kangaroo	<i>Macropus giganteus</i>
Black Swamp Wallaby	<i>Wallabia bicolor</i>
Red-necked Wallaby	<i>Macropus rufogriseus</i>
Echidna	<i>Tachyglossus aculeatus</i>
Red-Bellied Black Snake	<i>Pseudechis porphyriacus</i>
Bearded Dragon Lizard	<i>Pogona barbatus</i>
Brown Snake	<i>Psuedonaja textilis</i>
Lace Monitor	<i>Varanus varius</i>
Common Eastern Froglet	<i>Crinia signifera</i>
Pobblebonk (Eastern Banjo Frog)	<i>Limnodynastes dumerilii</i>
Long-necked Tortoise	<i>Chelodina longicollis</i>
Copper-Tailed Skink	<i>Ctenotus taeniolatus</i>
<b>EXOTIC - FERALS</b>	
Rabbits	<i>Oryctolagus cuniculus</i>
Deer (Red)	<i>Cervus elaphus</i>
Pigs	<i>Sus scrofa</i>
Cat	<i>Felis catus</i>
Hare	<i>Lepus europaeus</i>
<b>INVERTEBRATES</b>	
Spitfire Caterpillars	<i>Perga sp</i>
Bardi Grub (of Rain Moth)	<i>Trictena atripalpis</i>
Spiders	
Ants	
Native bees	
Honey bees	