



Primary
Industries

Preserving and Creating Biodiversity at the Landscape Level

The GBW Cross-Property Project

Jacinta Christie, Project Officer, NSW DPI
Box Gum Grassy Woodlands



CARING
FOR
OUR
COUNTRY



Communities
IN LANDSCAPES



**Can't see the
forest for the
trees?**

Cross Property Planning Approach

- Implemented through *Communities in Landscapes* (CiL) Project funded through Caring for our Country (CfoC)
- Multi-partnered agency response to achieving landscape scale management change in BGGW
- 6 groups across three catchments – Kyeamba & Humula, Limestone Creek & Dananbilla Illunie, and Uamby Creek & Belgravia.
- 10 connected landholders per group
- Covering around 62,000 hectares
- Seeding funds offered to assist with on-ground works



CARING
FOR
OUR
COUNTRY



Primary
Industries

Engagement Methodology

- Flexible and tailored
- Activities aimed at individuals within the group
- Identification of key components of their landscape through workshops, field days and surveys
- Aiming to build connections through both landscapes and people



CARING
FOR
OUR
COUNTRY



Farm Visits

Looking at land classes, uses, management practises and vegetation cover.



CARING
FOR
OUR
COUNTRY



Communities
IN LANDSCAPES



NSW
GOVERNMENT

Primary
Industries

Field days

Paddock Plants

Learning to recognise what they have on their farms (Trees, Grasses and Forbs)



CARING
FOR
OUR
COUNTRY



Primary
Industries

Connectivity workshop

Landholders looking at farm maps to increase connectivity within their landscape.



CARING
FOR
OUR
COUNTRY



Primary
Industries

Baseline Surveys

- Flora and Fauna surveys



CARING
FOR
OUR
COUNTRY



Communities
IN LANDSCAPES



NSW
GOVERNMENT

Primary
Industries

Grazing management

Stipa and DPI have been conducting grazing management days.



CARING
FOR
OUR
COUNTRY



Communities
IN LANDSCAPES



Primary
Industries

Healthy water on healthy farms

- Farmers are adopting practise change



CARING
FOR
OUR
COUNTRY



Primary
Industries



CARING
FOR
OUR
COUNTRY



Communities
IN LANDSCAPES



NSW
GOVERNMENT

Primary
Industries

Revegetation trials

Jacqui Stol from CSIRO selecting a revegetation site with Steve Palmer from Kyeamba Downs.



CARING
FOR
OUR
COUNTRY



Communities
IN LANDSCAPES



NSW
GOVERNMENT

Primary
Industries

Community Building – Learning from one another



CARING
FOR
OUR
COUNTRY



Communities
IN LANDSCAPES



NSW
GOVERNMENT

Primary
Industries

Presenting Property Plans to the Group



CARING
FOR
OUR
COUNTRY





“Allowing neighbours to work together towards a common goal” Roger Warren





“The approach allowed us to shift ideas about...” Richard & Leah Taudman





“Project allows us to enhance the environment and connect to new & existing reserves and national park areas” Ray Dowling



Feedback from the groups involved with Communities in Landscapes

- Enjoying the group process
- Builds a feeling of community amongst the farmers
- Enjoying the combined knowledge from partner agencies
- Allowing farmers to connect across a landscape
- Restoring a critically endangered EEC



CARING
FOR
OUR
COUNTRY



NSW
GOVERNMENT

Primary
Industries

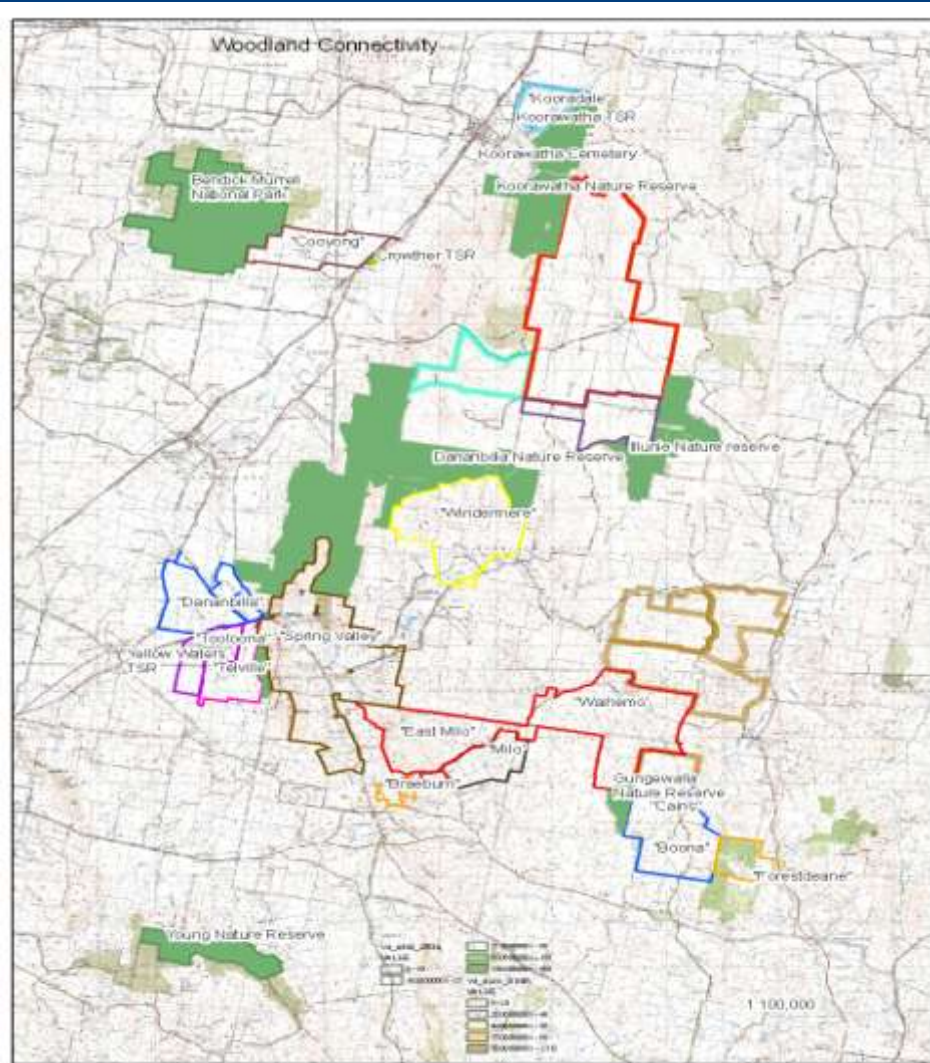
Dananbilla Illunie Complex Cross Property Biodiversity Conservation Planning Area

4403 ha of reserves connected
across private property

Coloured areas highlight current
properties involved in CPBCP

Potential to connect a further
2200 ha with future funding

 Existing Reserves

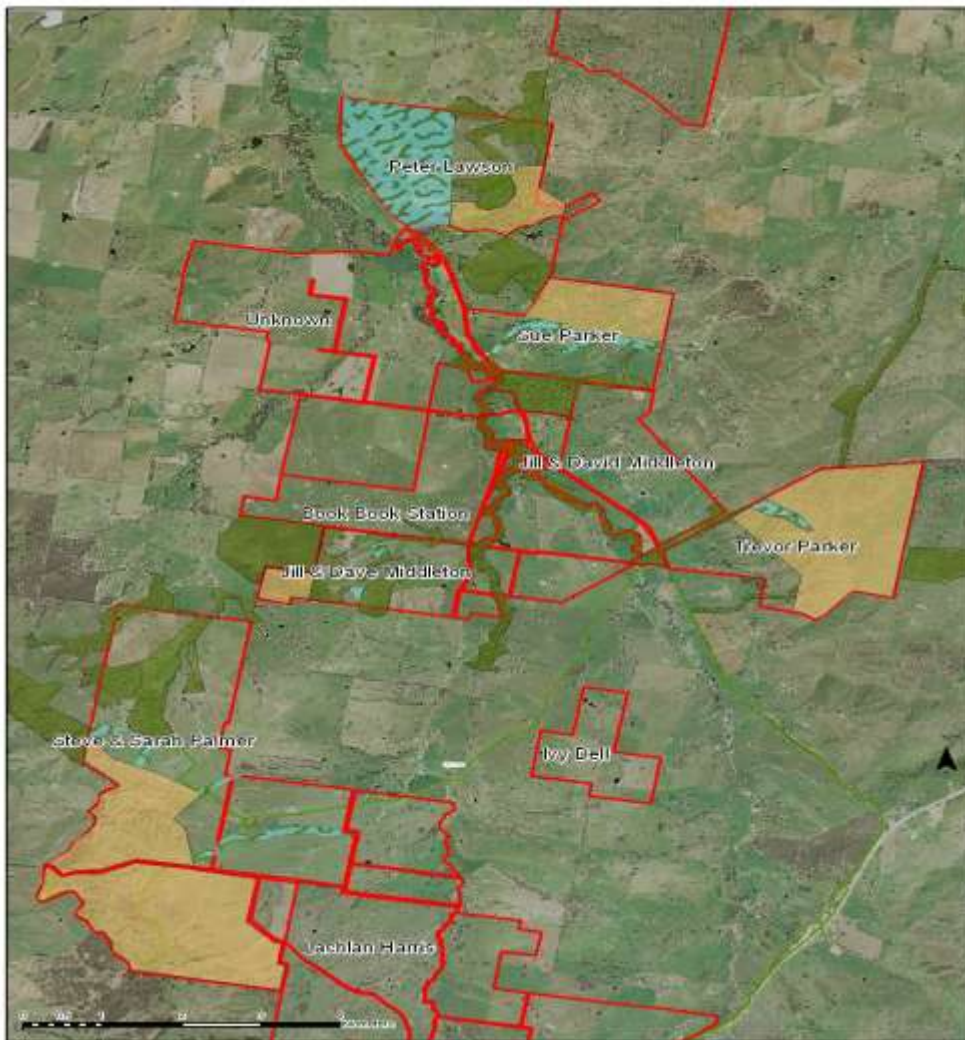


Kyeamba Valley

Cross Property Biodiversity Conservation Planning Area

Changed management on 8,300 ha to improve biodiversity values.

- Scattered paddock tree plantings
- Grazing to benefit biodiversity
- Existing remnants





The cross-property approach allows us to see the forest, not just the trees!