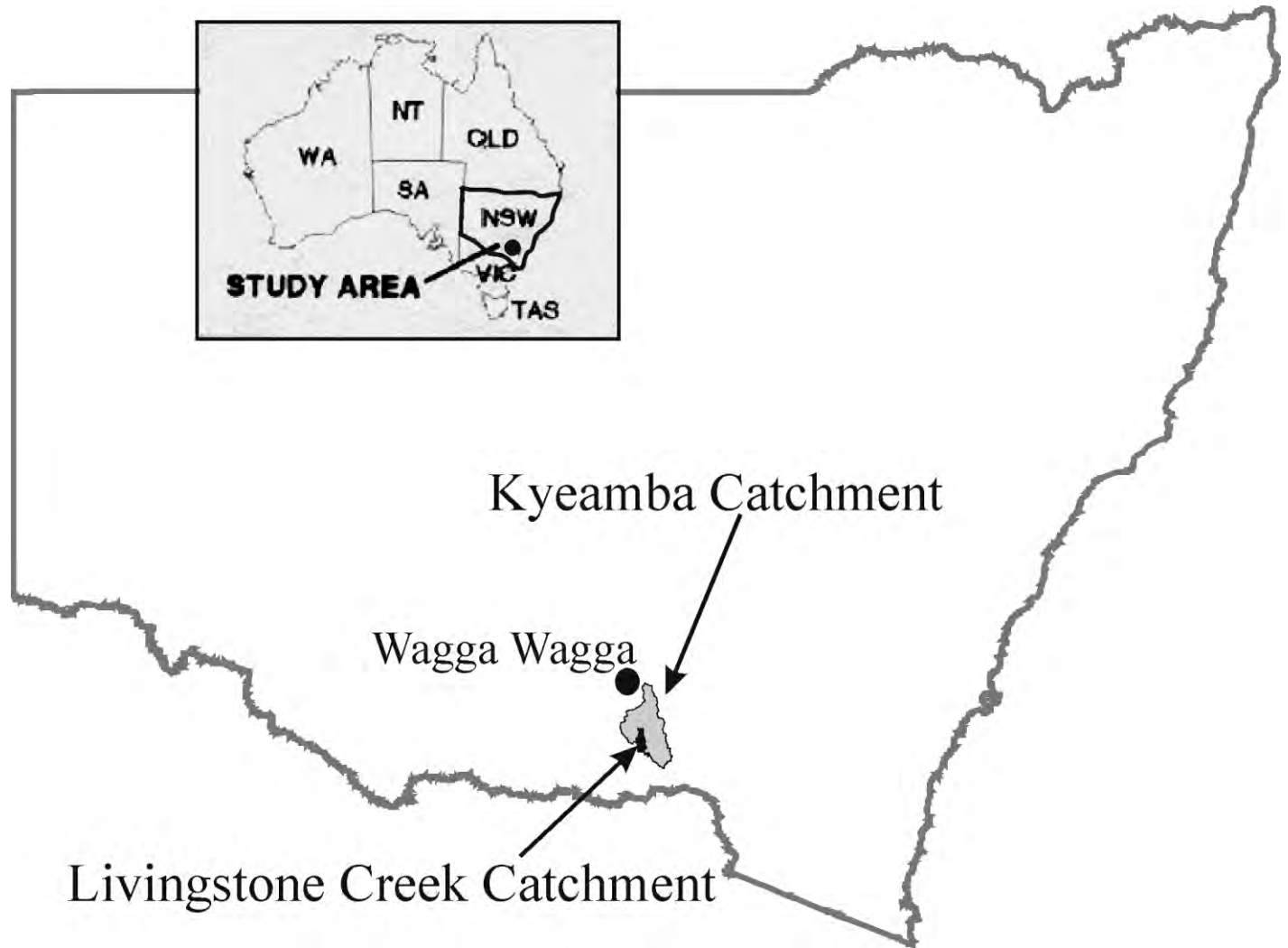


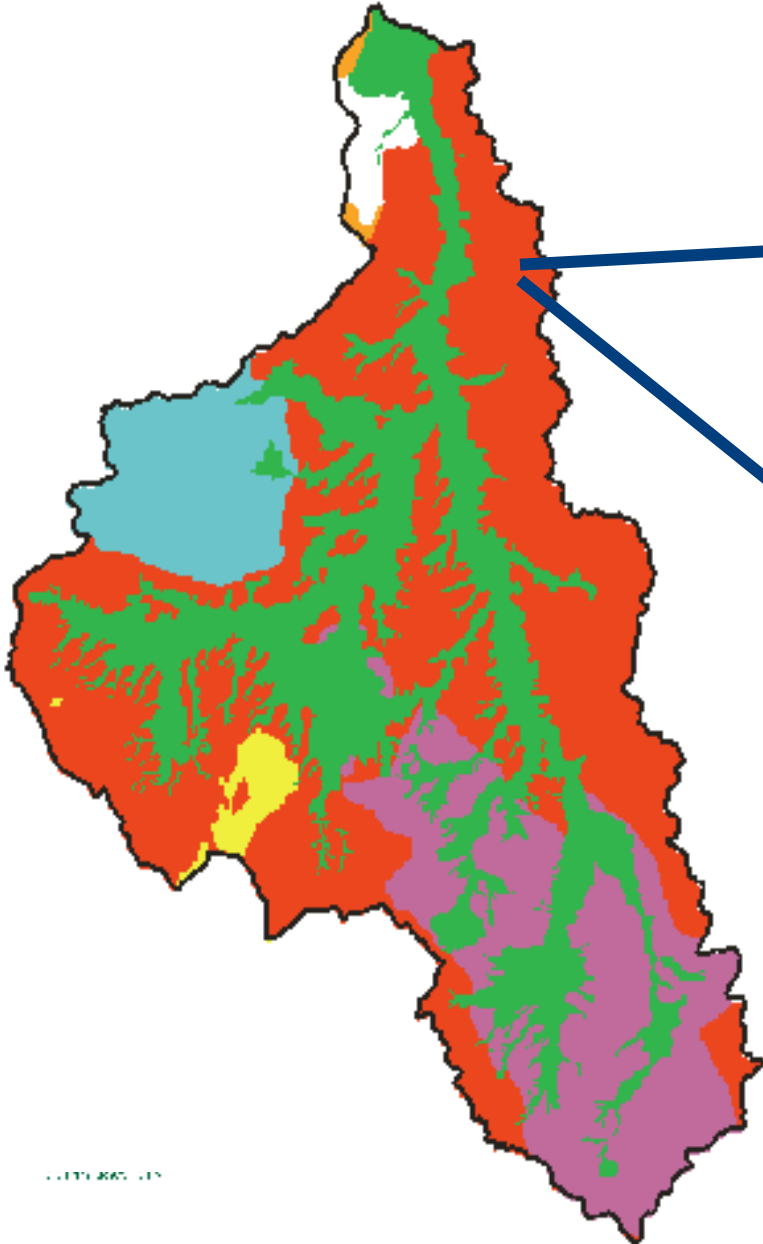
Valley hydrology and salt management

Background

Site location:



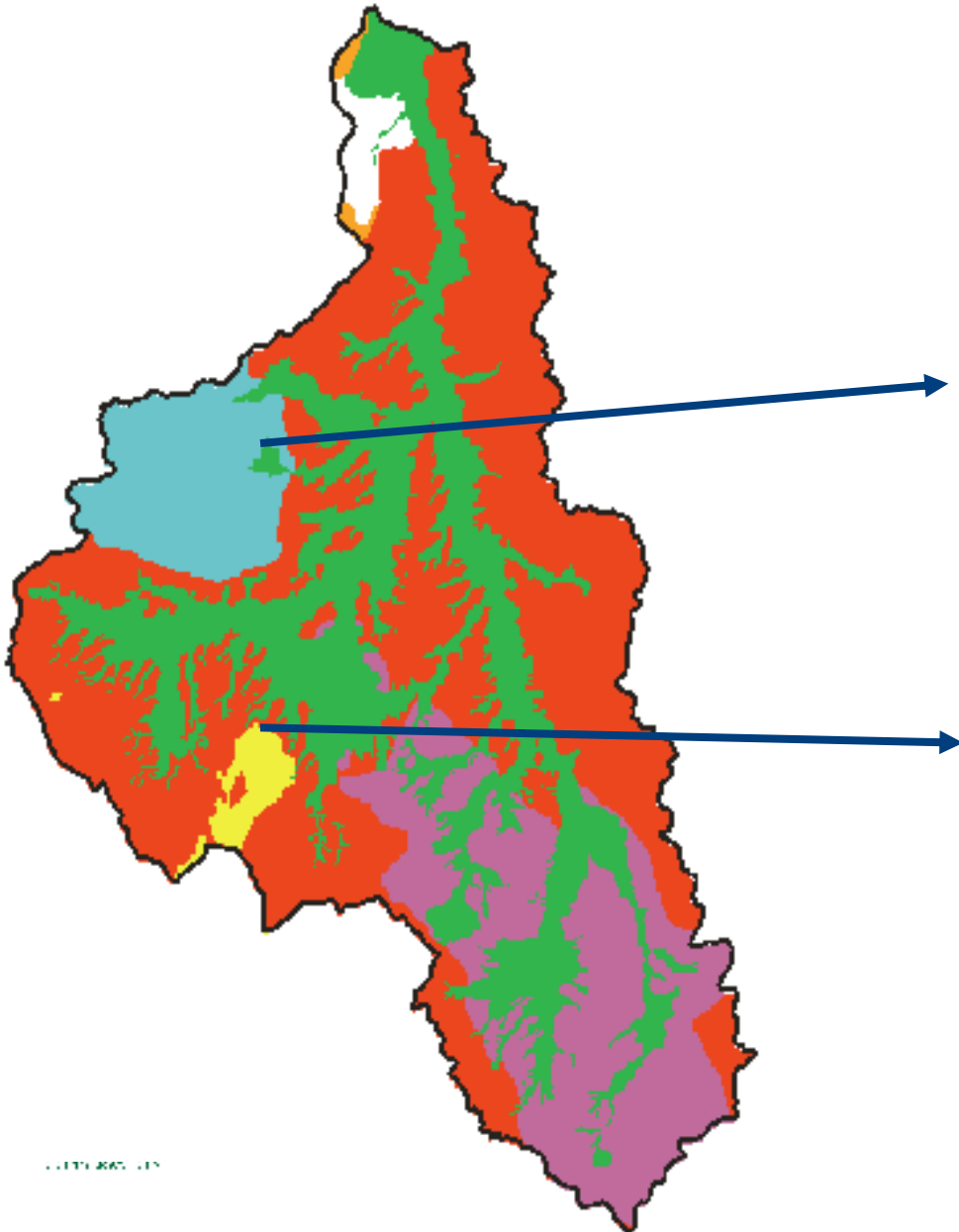
Kyeamba Geology



Meta Sediments



Kyeamba Geology

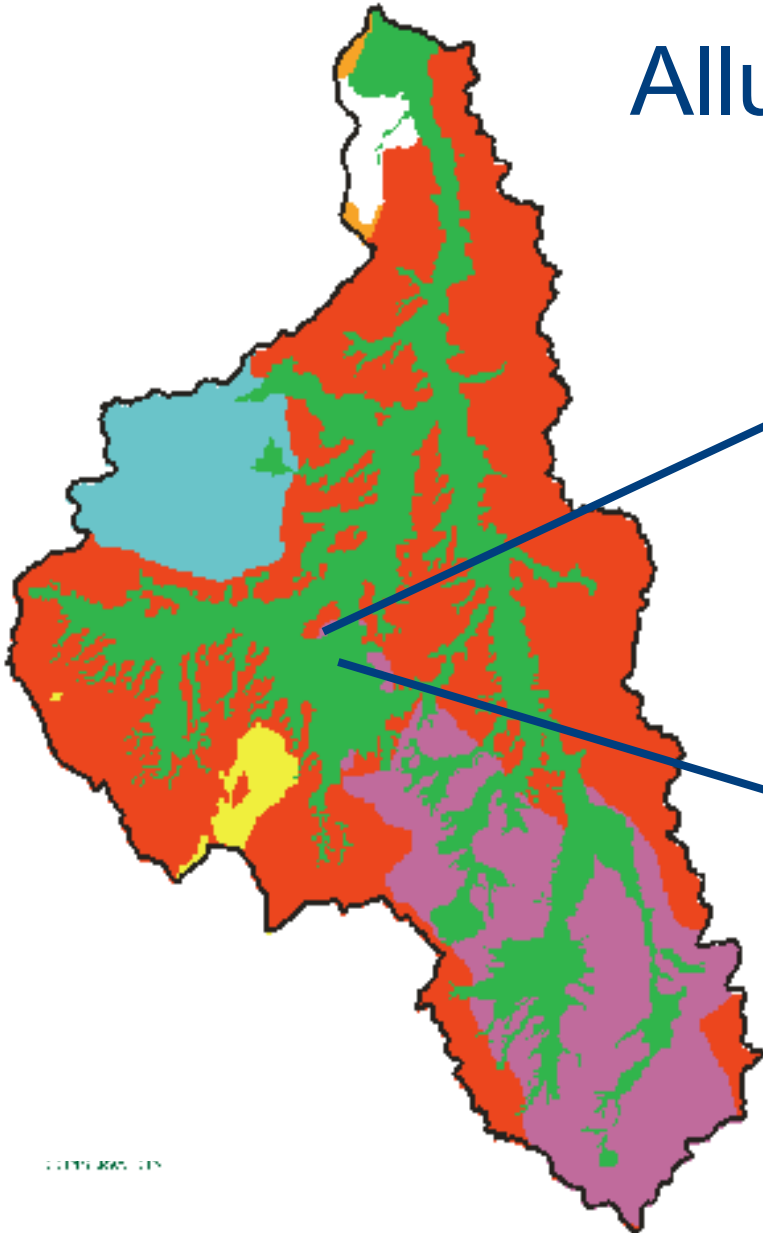


Granites

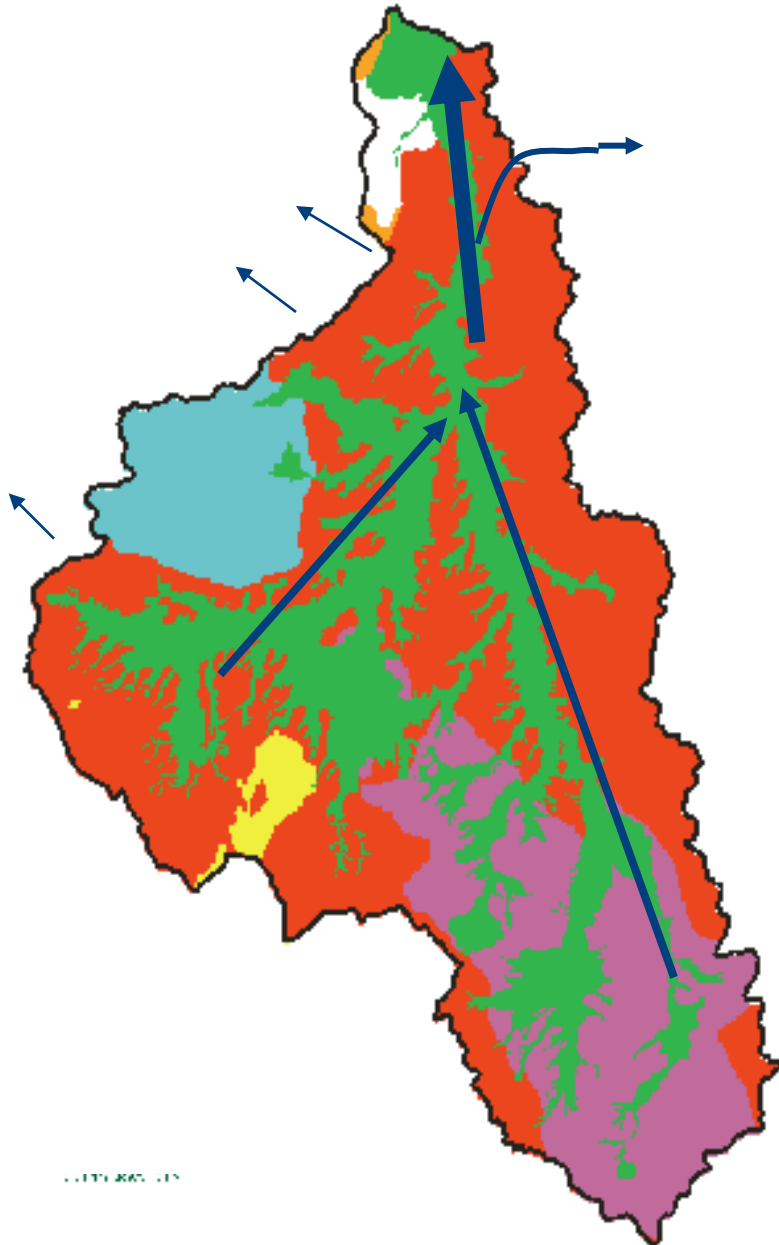


Kyeamba Geology

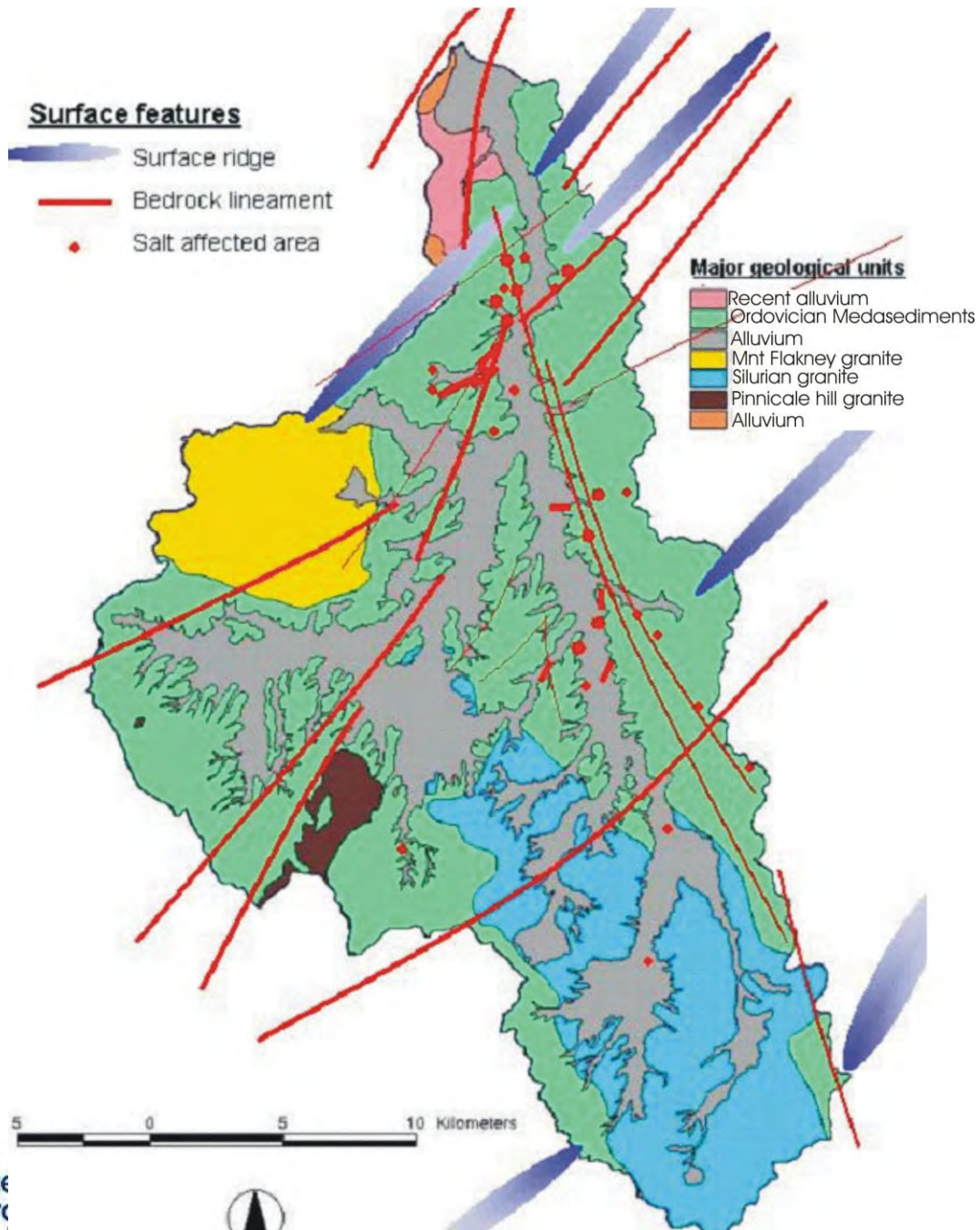
Alluvium

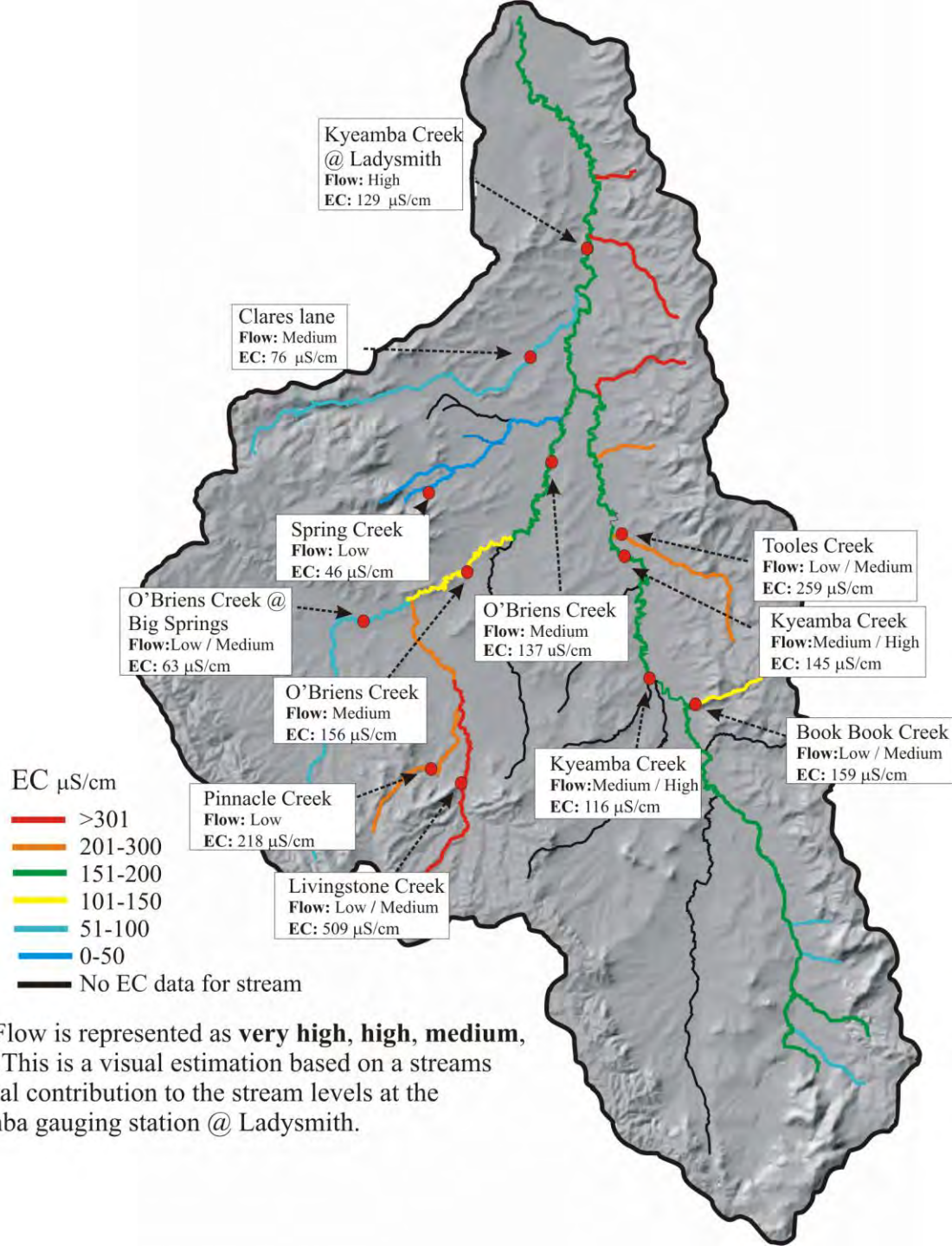


Kyeamba Geology



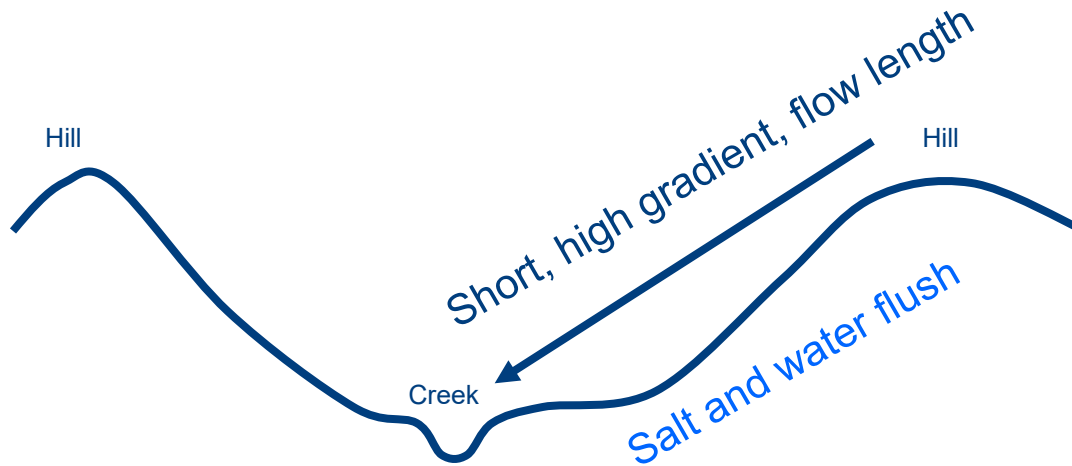
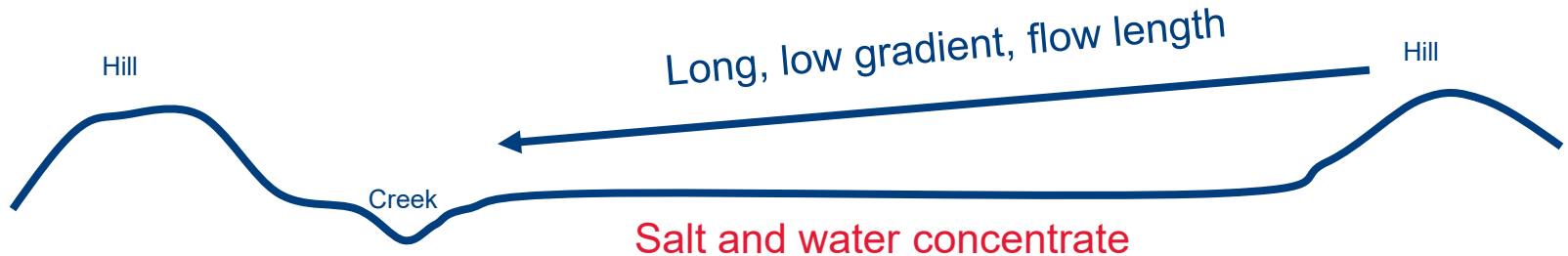
General Groundwater
Flow, Blockage leads to
pressure responses





Note: Flow is represented as **very high**, **high**, **medium**, or **low**. This is a visual estimation based on a stream's potential contribution to the stream levels at the Kyeamba gauging station @ Ladysmith.

Schematic cross-sections Hillslope to Creek





Office of
Environment
& Heritage



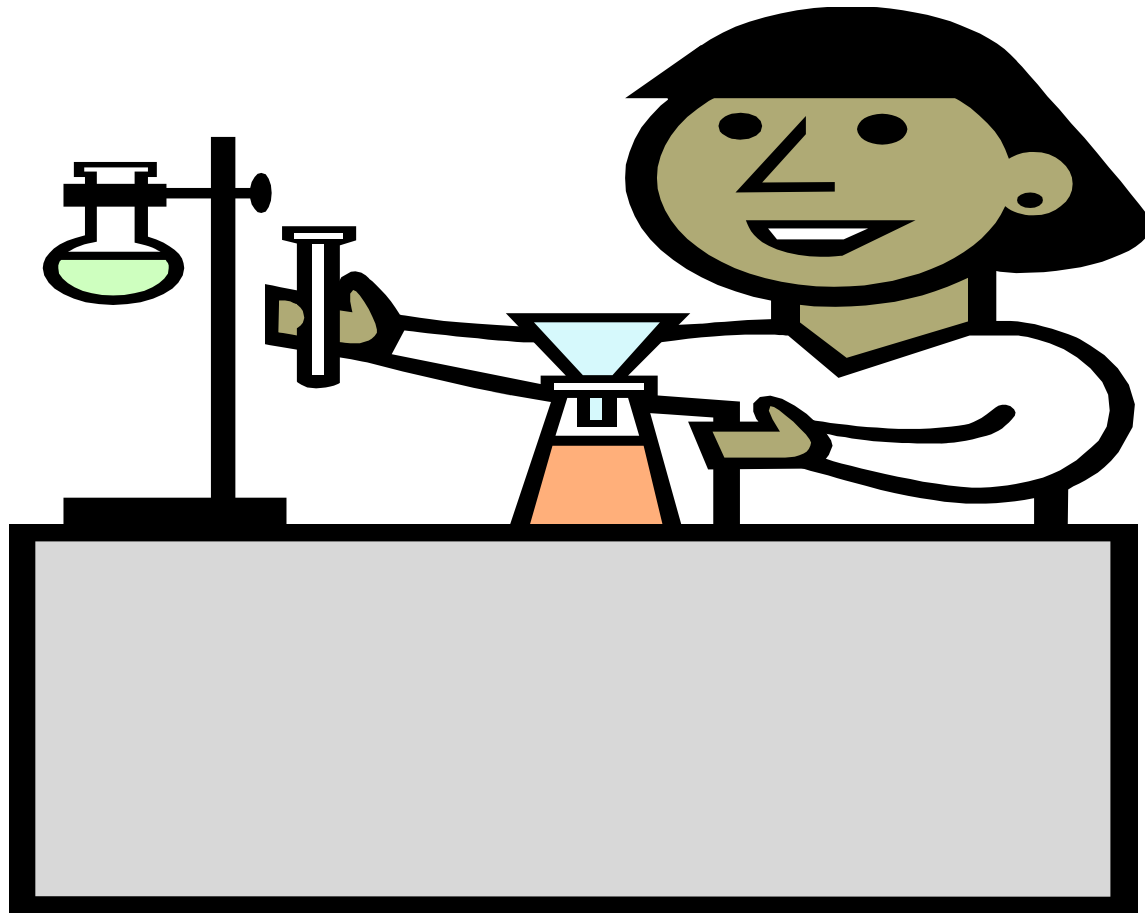
Department of
Primary Industries

Summary

- Geology
- Shape of catchment, (Blockages)
- Geological Faults and weakness
- Soils water flow paths for moving salt



EXPERIMENT TIME



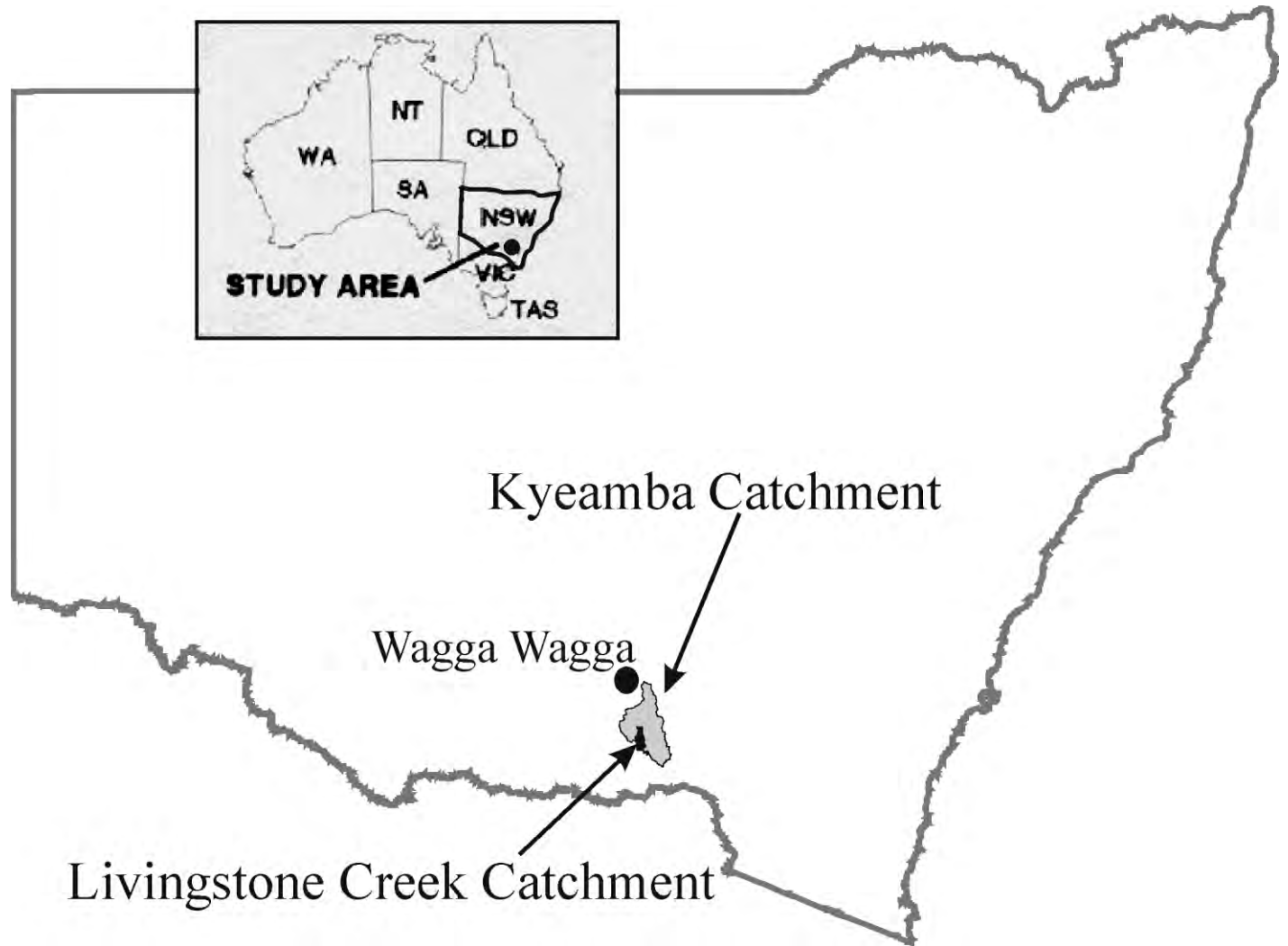
Key Sites



Legend

- Key sites
- CMA's

Site location:

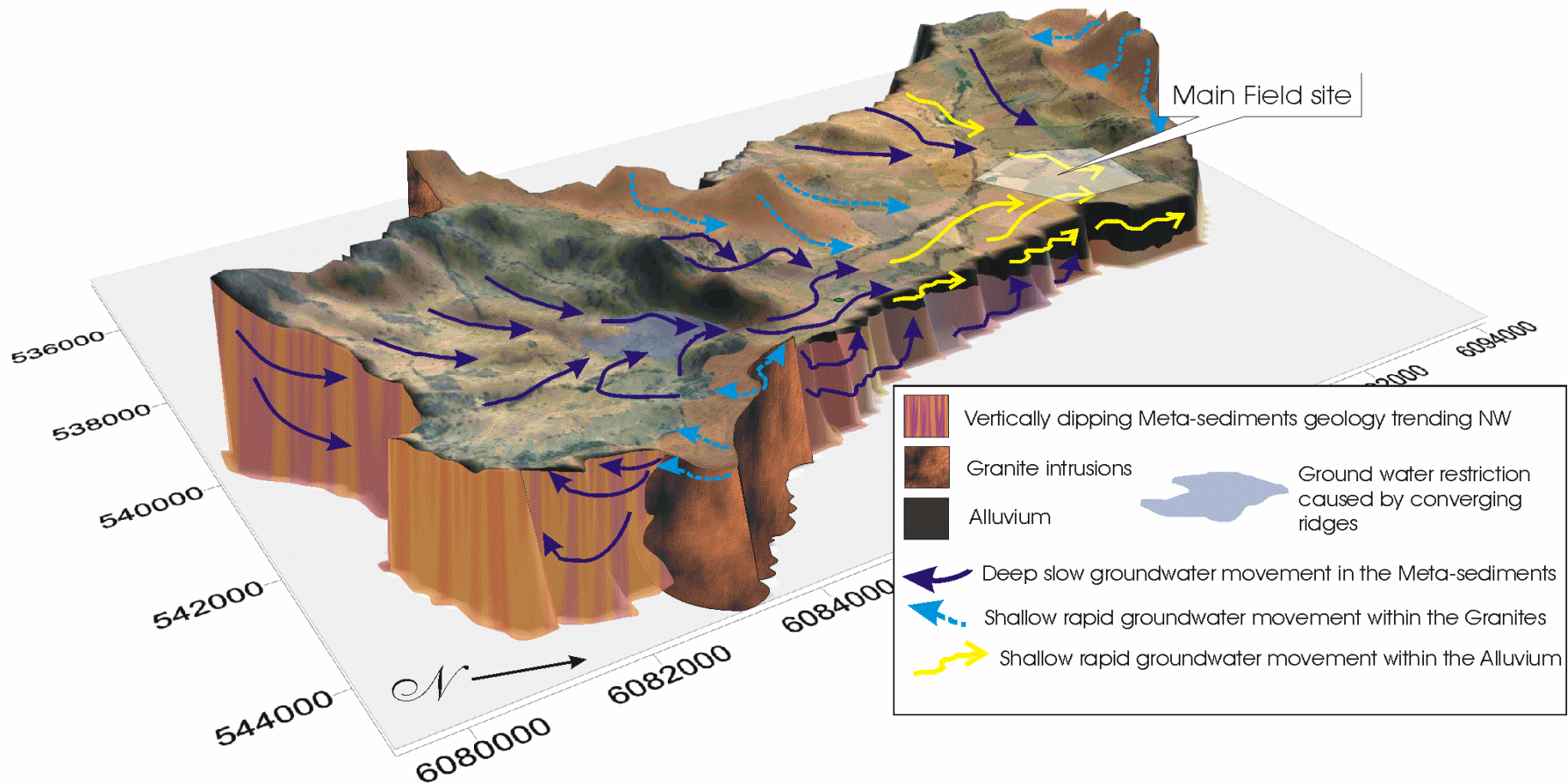


Office of
Environment
& Heritage



Department of
Primary Industries

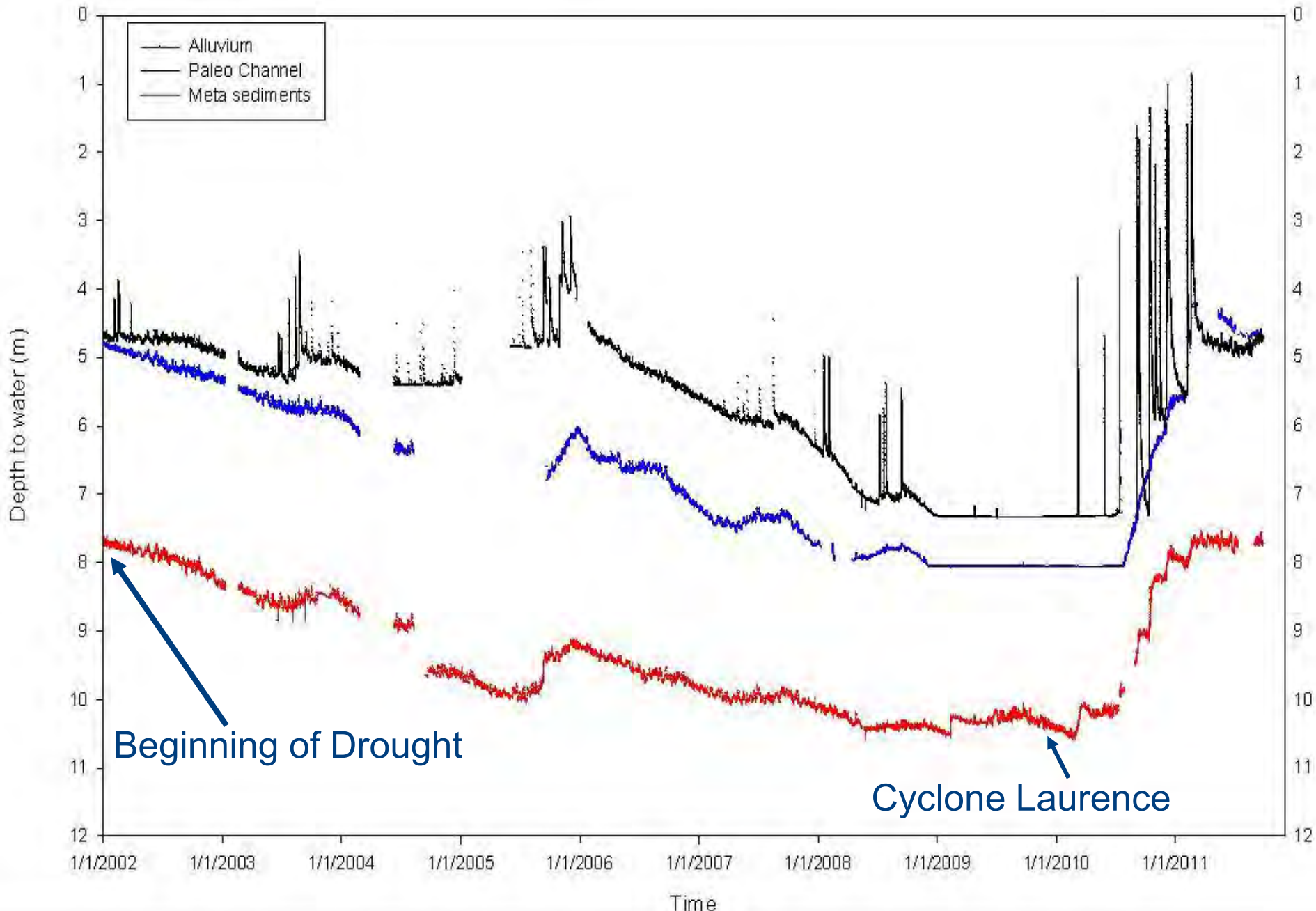
Background: Groundwater systems



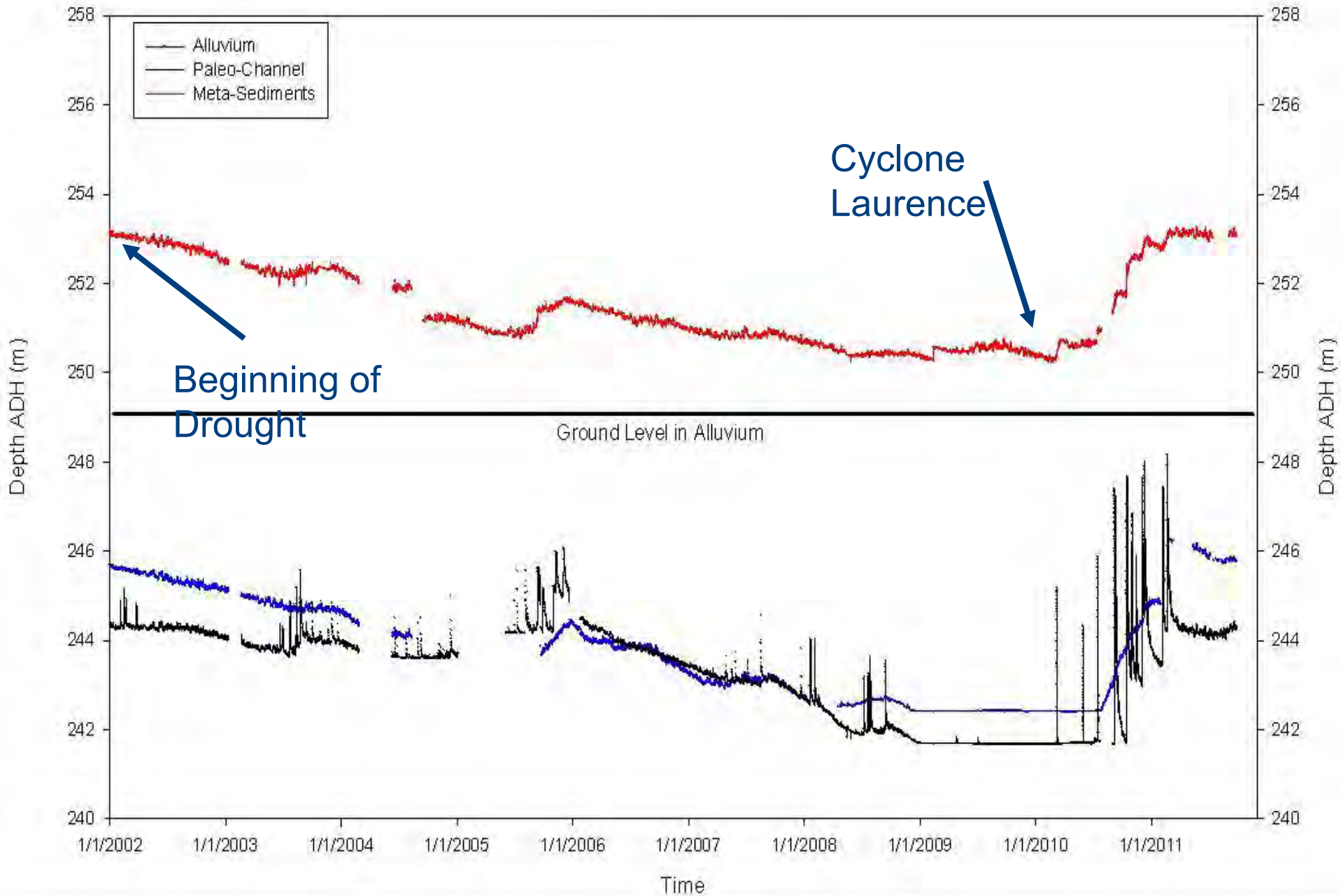
Measuring groundwater levels

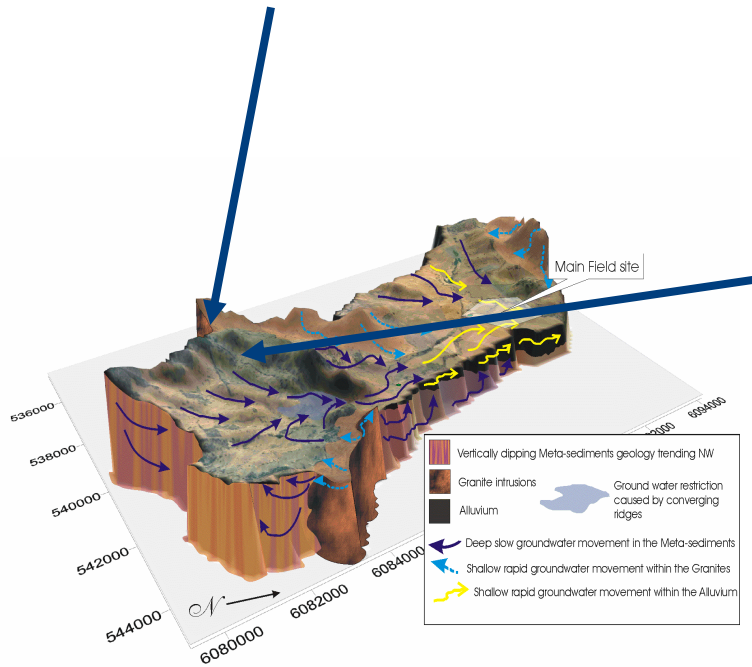


Livingstone Creek Piezometers



Livingstone Creek Piezometers





Acknowledgements

- Thanks to John Alastair and Geri Duncombe; Richard and Marty Pillow; Alan, Belinda and Michael Cox, plus the other landholders around Kyeamba Valley that support our work
- NSW State Government Departments
- BoM