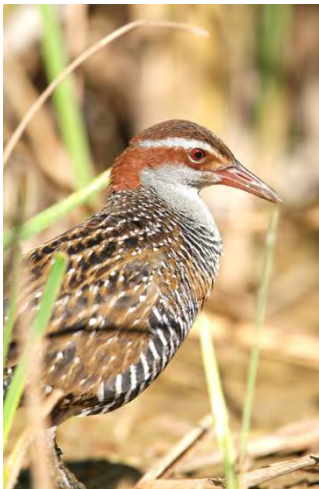


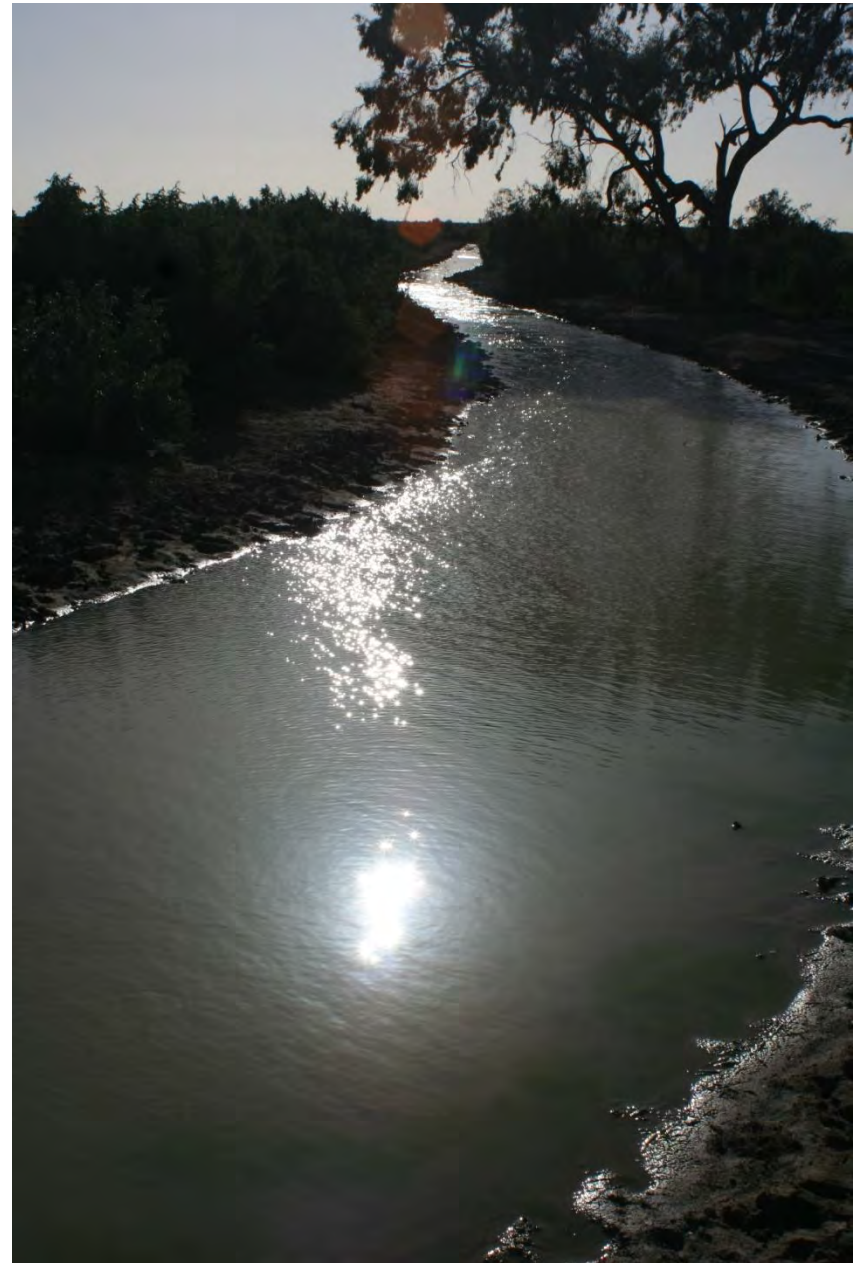


Wah Wah Wildlife From Tanks to Troughs











Results

- 96 species (51)
- Most value to birds
- Mostly common species (e.g. Galah, Wood Duck, Roos, Long-neck Turtle)
- Carp, rabbits, boxthorn, thistle



Results

- White-fronted Chat, threatened
- Poor compared to natural wetlands (limited shallows and waterplants) but together their value is significant and their loss will be a big change.





Stock Tank near Gunbar



The Exception & The Norm

Waterplants And Shallows Boost Wildlife Diversity In Farm Dams

Stock Tank near Yurdyilla











- **So, which species do we target our mitigation efforts towards?**

Three Main Options ...

- Maintaining water at a small number of select tanks and improving them;
- creating small wildlife ponds;
- and the construction of a large, dedicated Wah Wah wildlife wetland are recommended to mitigate habitat loss.
- Done well, they could even improve overall wildlife habitat quality across the Wah Wah landscape.

- **So, which biodiversity is most important to us?**